

H721/921/931

Loop Powered 4-20 mA Output



EASY 2-WIRE INSTALLATION!

DESCRIPTION

The H721, 921, and 931 provide accurate load trending information with a proportional 4-20mA output signal. The H931 features an integral command relay for start/stop applications.

APPLICATIONS

- Load trending
- Motor control

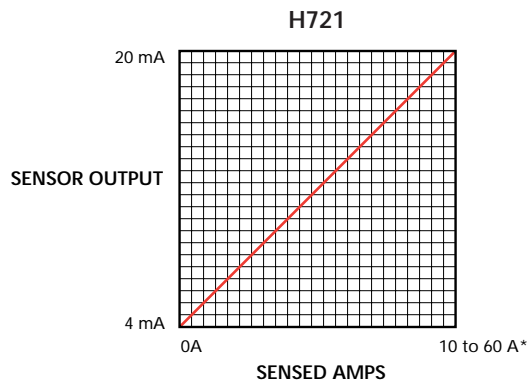
Loop-powered analog current sensor with integral start/stop command relay

- Reduces the number of installed components...saves time and space
- Self-gripping split core for fast retrofit installation...no need to remove conductor
- Economical solid-core features adjustable bracket for easy alignment
- No jumpers on unit...reduces installation error
- Loop powered...reduces wiring and install time

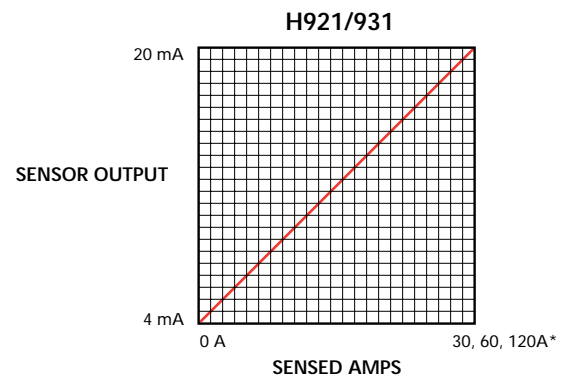
Selectable factory calibrated ranges up to 120 A for increased flexibility and resolution

- Factory calibrated switch selectable ranges (30, 60, 120 A) for high resolution and installation ease
- One device to install...reduces installation charges
- Mounting bracket for installation flexibility
- 24 VAC/DC command relay switches up to 5 A @ 240 VAC
- Made in USA; 5 year limited warranty

ANALOG CURRENT SENSORS



*Adjusted with Span Potentiometer



*Factory calibrated ranges selected with the amperage range switch

Ordering INFORMATION



MODEL	AMP RANGE	OUTPUT	COMMAND RELAY
Split-core *H931	30/60/120 A	4-20 mA, loop powered	
H921	30/60/120 A	4-20 mA, loop powered	
Solid-core H721	5 to 55 A	4-20 mA, loop powered	

COMMAND RELAY: Coil = 24VAC/DC@10 mA; Contact = Form A (SPST) 5(3)@250 VAC/30 VDC, 1/8 HP

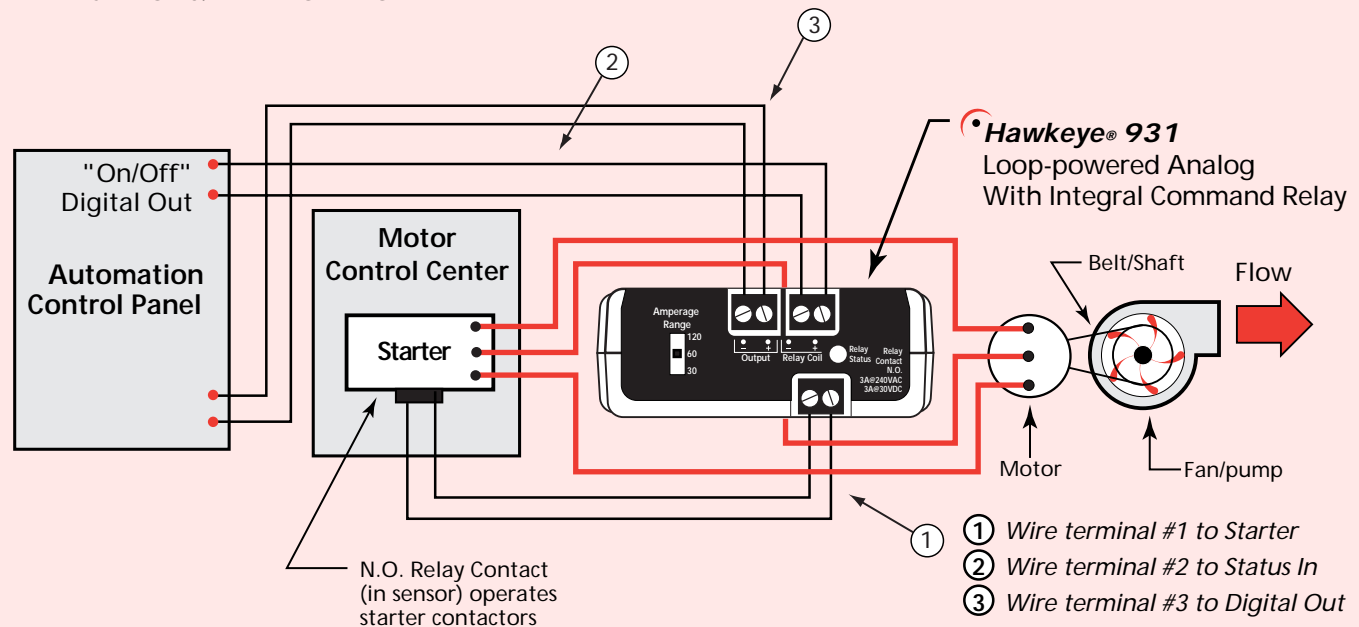
Optional Ordering INFORMATION

MODEL	DESCRIPTION
H700/900-DIN	DIN Rail Clip Set compatible with all split-core models

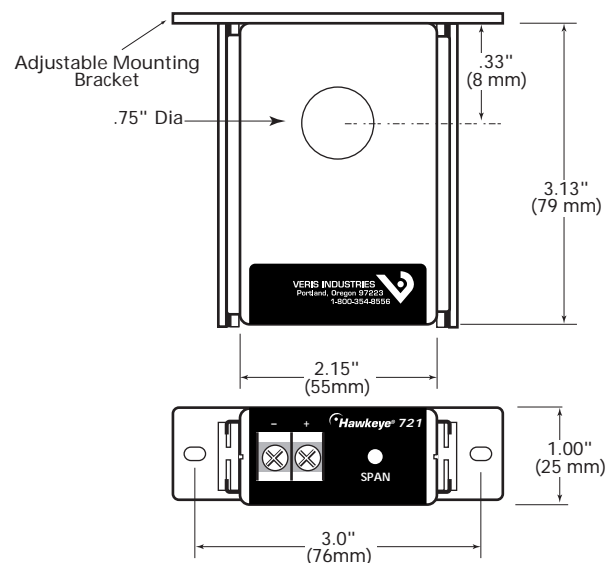
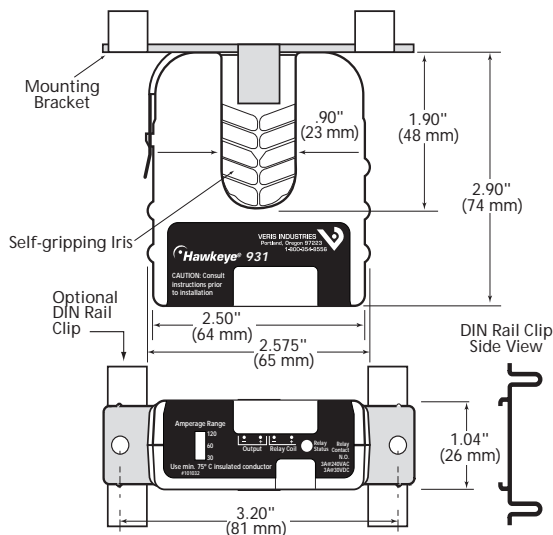
Not available for the H721

*Custom calibration available upon request

APPLICATIONS/WIRING DIAGRAM:



DIMENSIONAL DRAWINGS



SPECIFICATIONS

Amperage Range	see ordering table
Isolation	600 VAC rms
Frequency Range	60 Hz. nominal
Accuracy	
H721	±2% of reading from 10% to 100% of full scale range
H921/931	±2% full scale from 0 to 10% of full scale
Temperature Range	-15 to 60° C
Humidity Range	0 - 95% non-condensing
Relay Coil	24 VAC/DC 15 mA nom.
Solid-core H721 Dimensions	L x W x H 3.13" x 2.15" x 1.00"
Sensor Hole Size	0.75"
Split-cores H921/931 Dimensions	L x W x H 2.90" x 2.575" x 1.04"
Sensor Hole Size	(L x W) 1.90" x .90"