



# SMARTLOGGERS™

ON/OFF TIME-OF-USE INSTRUMENTS

MEASURE TOTAL-ON TIME AND ON/OFF TRANSITIONS OF ALMOST ANY DEVICE

## FEATURES

- Instantly see what your logger has recorded. All **SMARTloggers™** come with a 5-digit LCD showing On-Time (in hours) and Percent On.
- With a storage capacity of over 32,000 records, **SMARTloggers™** can record unattended for months or years.
- Simple mounting using power rare earth magnets, Velcro®, or screw hole easily secures the instruments out of sight.
- Interfaces with **SMARTware™** Windows® software package for easy data retrieval and simple, sophisticated data analysis.
- Compact and rugged, the **SMARTloggers™** are designed for provide many years of service in a variety of operating conditions.
- Five-year battery life.
- **Three-year warranty.**

## APPLICATIONS

- Lights
- Motors
- Water Heaters
- Gas Valves
- Switches & Relays
- Virtually any electric load

# SMARTLOGGER™ SPECIFICATIONS

GENERAL	
LOGGER TYPES	<b>LIGHTING:</b> Internal Photo Sensor <b>MAG:</b> Internal Magnetic Field Sensor <b>CT:</b> External Current Transformer <b>CONTACT:</b> External Switch or Relay
DISPLAY	5 Digit LCD showing Total On-Time, Percent On, On/Off Annunciator
TIME STAMPS	Month, Day, Year, and Hour, Minute, Second
TIME STAMP RESOLUTION	1 Second
MINIMUM EVENT ON/OFF CAPTURE	0.5 Hz (2 seconds)
DATA ANALYSIS	Statistics, summaries, graphs, and data export using <b>SMARTware™</b> software
MEMORY	32,576 records. Ring memory plus separate On-Time Totalizer
SENSITIVITY	<b>LIGHTING</b> logger: Adjustable <b>MAG</b> logger: 40 mGauss minimum <b>CT</b> logger: 0.25 amp minimum <b>CONTACT</b> logger: Dry Contacts
COMMUNICATIONS	
COMMUNICATION	USB with <b>SMARTlogger</b> Communications Cable
MECHANICAL	
OPERATING TEMPERATURE	0° to 60°C (32° to 140°F)
OPERATING HUMIDITY	5% to 95% non-condensing
BATTERY LIFE	5 years
INTERNAL CLOCK	Real-time, crystal controlled, true calendar, 20 ppm accuracy (<1 minute/month)
WEIGHT	40 gm (1.5 oz)
DIMENSIONS	6.3 x 3.8 x 1.9 cm (2.5" x 1.5" x 0.75")
MOUNTING	Rare earth magnets, Velcro®, or mounting hole
WARRANTY	Three Years

## NEED ANSWERS TO ENERGY QUESTIONS?

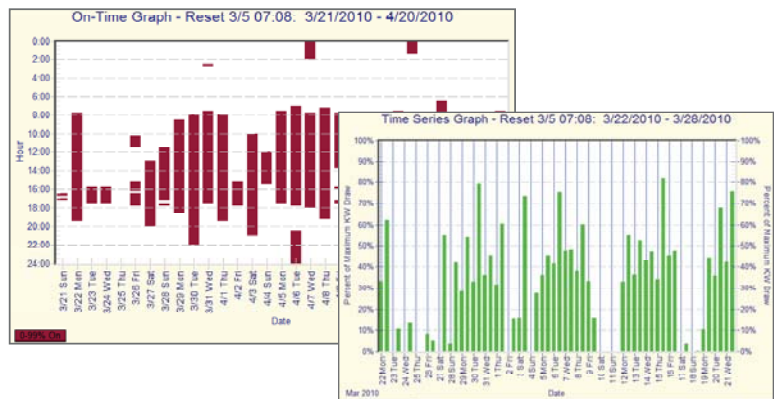
The **SMART**logger TOU series of instruments are designed to monitor the On/Off status, Time-of-Use operating schedule, and Total On-Time for energy consuming devices and systems. Models are available for lighting systems, motors, relays and switches, and virtually any electric load. The non-contact monitoring makes installation simple. Each of these small, robust instruments provide power data for superior energy management.

## FOUR MODELS AVAILABLE:



## SMARTWARE: EASY DATA ANALYSIS

- All **SMART**loggers use **SMARTware** Windows-based software that makes it easy to analyze and visually present recorded data.
- Monitor usage trends with the click of a mouse.
- Pre-programmed graphs and analysis functions make understanding your data simple.
- Easily export usage data into other popular spreadsheet and database programs.
- Extremely flexible to accommodate a wide range of measurement needs.



**DENT Instruments, Inc.**  
Energy & Power Measurement Solutions

925 SW EMKAY DRIVE  
BEND, OREGON 97702 USA  
541.388.4774 | 800.388.0770  
[www.DENTinstruments.com](http://www.DENTinstruments.com)



**ASRAS CO.,LTD.**  
1694, 1694/1 Prachasongkhro Road,  
Dindaeng, Dindaeng, Bangkok 10400  
Tel. 02-692-3980, Fax. 02-692-3978  
E-mail: [sales@asras.com](mailto:sales@asras.com)  
[www.asras.com](http://www.asras.com); [www.asras.co.th](http://www.asras.co.th)

